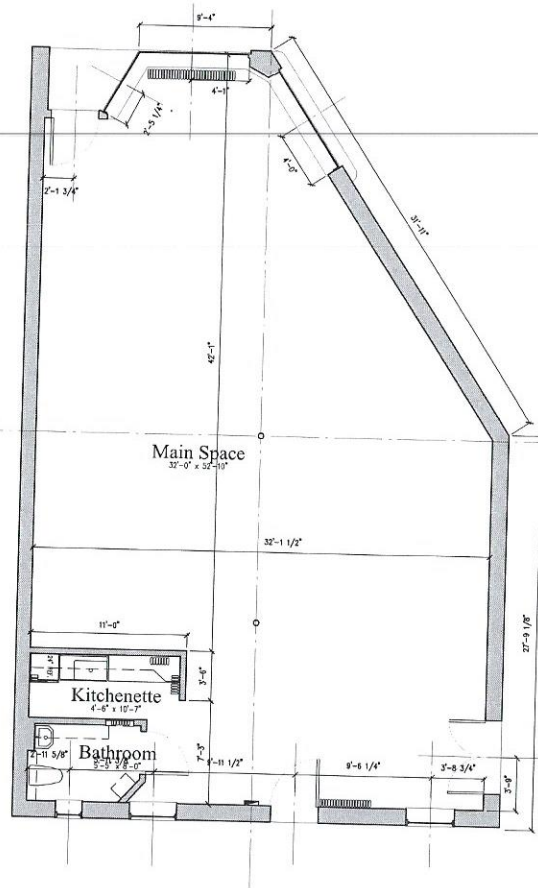


# As-Built Plans

509 Park Ave.  
Kenilworth, IL 60043



Floor Plan  
SCALE: 1/4"=1'-0"

REVISION NO.	DATE
--------------	------

## Renew Management Retail Space

590 Park Ave.  
Kenilworth, Illinois 60043

**EDWARD DEGAN ARCHITECTS**  
590 Park Ave. #11  
Kenilworth, IL 60043  
www.edwarddegan.com

SUBMISSION	DATE
As-Built Building Construction	12/9/2014

Title:  
As-Built Plan  
General Specifications

Sheet No.  
**A0.1**  
Project No. 1426