

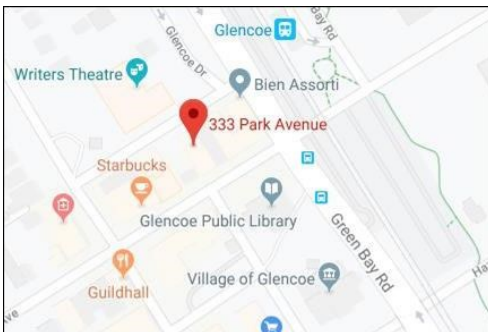


320 Tudor Court, Glencoe, IL Office Space For Lease



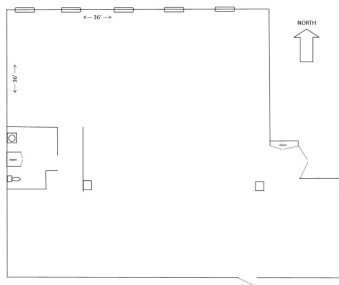
Charming building in the heart of Glencoe, steps from Metra

\$3,300 per month



Approximately 1500 Sq. Ft steps from the train station. Above BMO Harris Bank. Open layout with breakout Area and 3 windows facing North. Dining, shops and Writers Theater all within steps away.

Perfect for internet businesses with 3-6 employees.



320 Tudor Court
Approximate layout not to scale)

FOR LEASE

Farnsworth-Hill, Inc. is an agent of the owners.

James R. Nash, Jr. Managing Broker
847-328-3330
jim@farnsworth-hill.com