

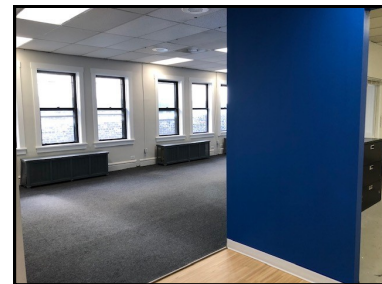
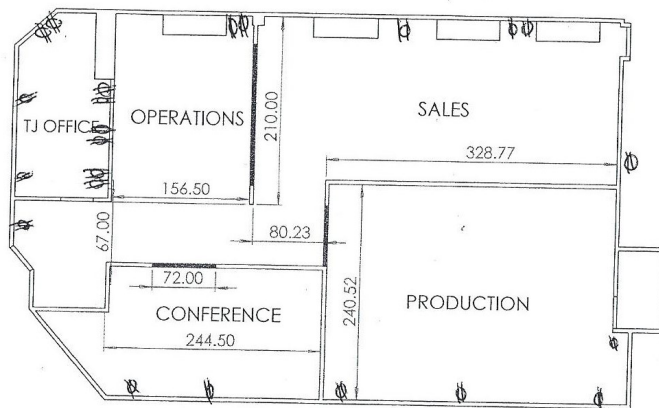


## 825 Chicago Avenue— Second Floor Office Space



Relocate your business to the historic Leffingwell building in Evanston.

Loft-style building steps from Metra UP-N and CTA Purple Line Stations as well as Main Street shopping and dining options.



**#2B** Approximately 2,000 sq.ft.

Available now. \$3,000/mo.

Includes heat and taxes. Tenant pays electric.

# FOR LEASE

James R. Nash, Jr. Managing Broker

847-328-3330 [jim@farnsworth-hill.com](mailto:jim@farnsworth-hill.com)

*Farnsworth-Hill, Inc. is an agent of the owners.*